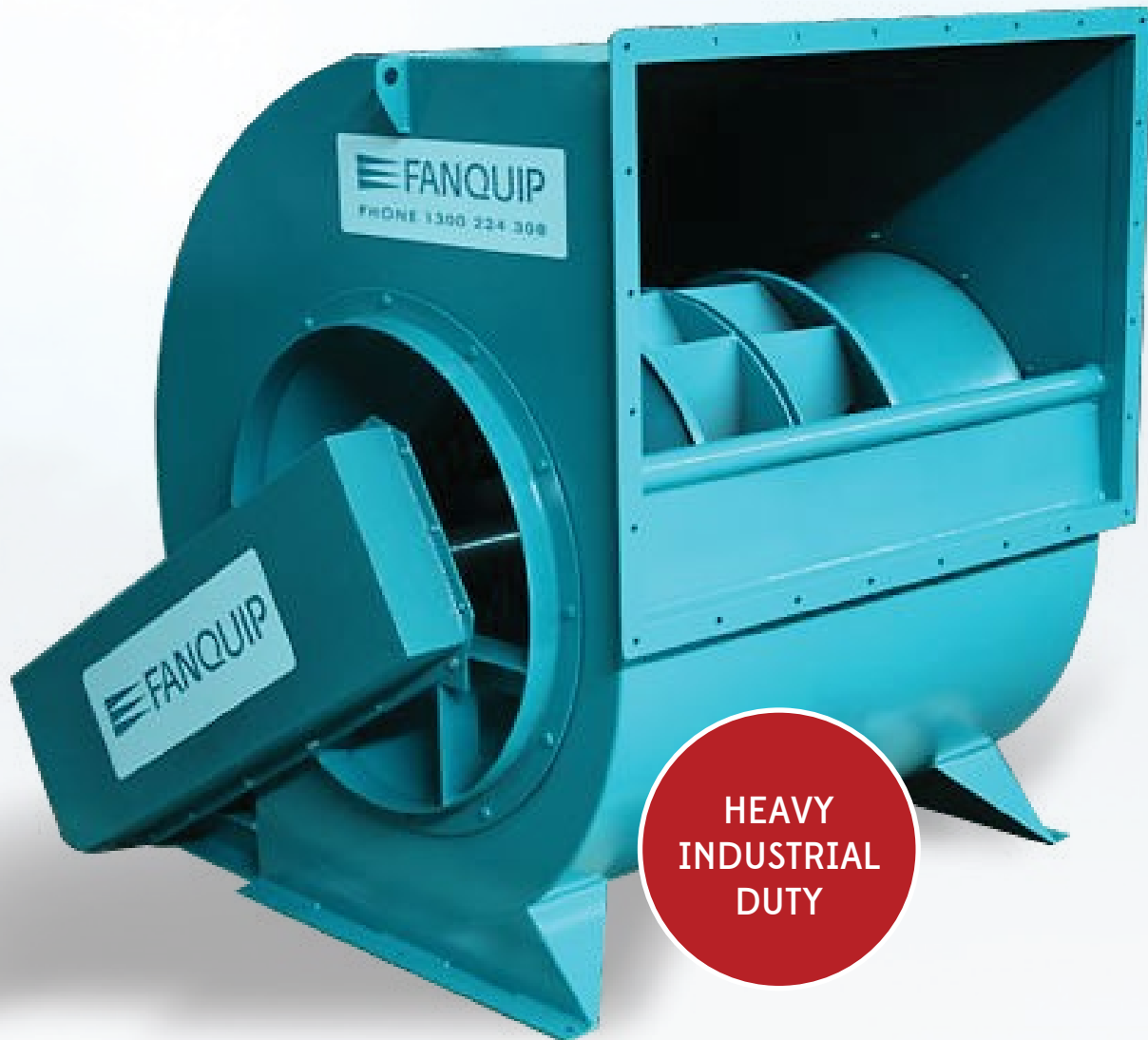
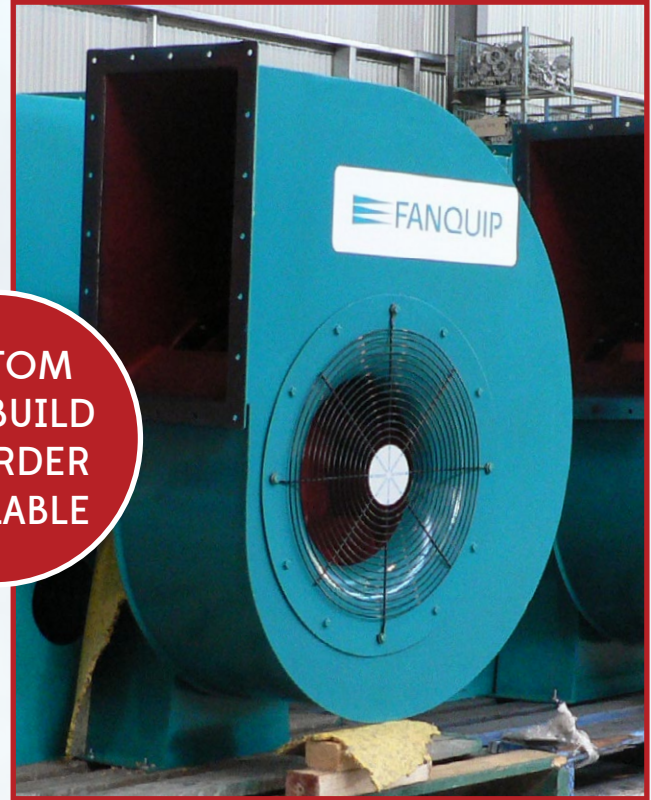
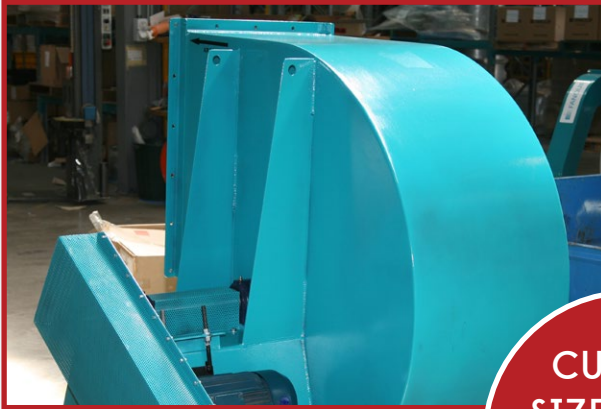


# Backward Inclined Centrifugal



## Clean air handling fan High volume – Low noise

- IP55 motor
- Backward curve - aerodynamic construction
- Available in painted, HDG, stainless steel



**CUSTOM  
SIZE BUILD  
TO ORDER  
AVAILABLE**

**OPTIONS**

- Galvanised/stainless steel
- Intrinsically safe motors
- Hazardous locations (flameproof)
- Custom arrangements/specifications
- Sizes from 300mm to 600mm in diameter
- Motor Power - 1.1kW to 7.5kW
- Air Volume - 236L/s to 4060L/s
- Static Pressure 284Pa to 4060Pa

MODEL No.	INLET DIAMETER (mm)	OUTLET (mm)	MOTOR SPEED (RPM)	MOTOR POWER (kW)	AIR VOLUME (L/s)	STATIC PRESSURE (PA)
<b>T4-72-30-A2</b>	300	312 x 183	2880	1.5	875	706
					475	1127
<b>T4-72-30-A4</b>	300	312 x 183	1440	1.1	440	176
					236	284
<b>T4-72-35-A2</b>	350	364 x 214	2880	2.2	1400	960
					755	1530
<b>T4-72-35-A4</b>	350	364 x 214	1440	1.1	700	235
					378	382
<b>T4-72-40-A2</b>	400	416 x 245	2880	5.5	2070	1264
					1122	2000
<b>T4-72-40-A4</b>	400	416 x 245	1440	1.1	1030	314
					561	500
<b>T4-72-45-A2</b>	450	468 x 275	2880	7.5	2822	1600
					1605	2500
<b>T4-72-45-A4</b>	450	468 x 275	1440	1.1	1500	390
					800	640
<b>T4-72-50-A2</b>	500	520 x 306	2880	15	4060	1970
					2200	3140
<b>T4-72-50-A4</b>	500	520 x 306	1440	2.2	2030	490
					1100	784
<b>T4-72-60-A2</b>	600	624 x 387	1440	4.0	5500	706
					1900	1130
<b>T4-72-60-A4</b>	600	624 x 387	960	1.5	2320	314
					1261	490