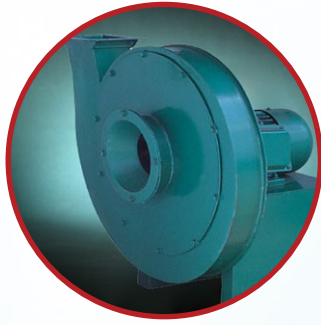


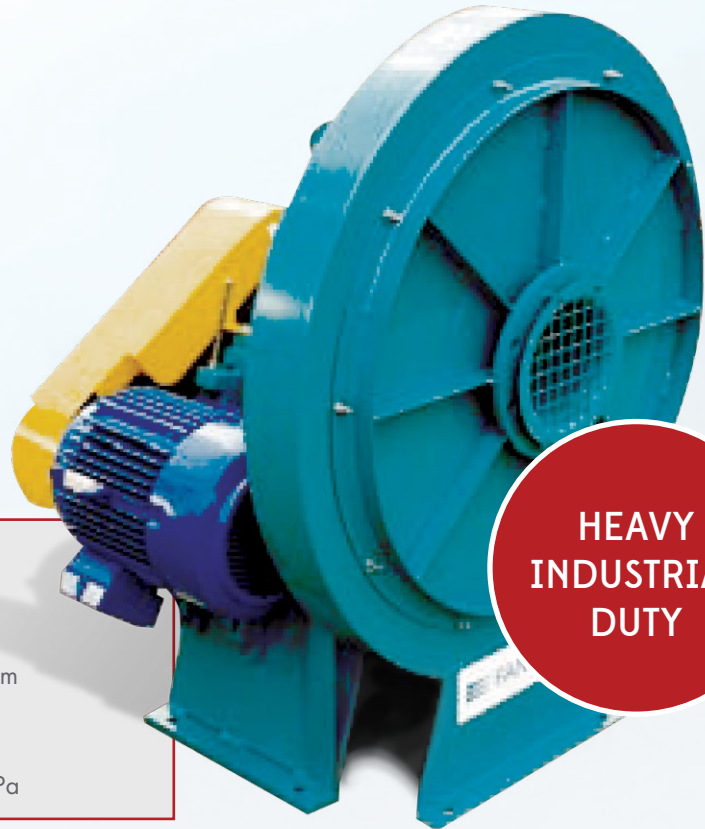
Medium Pressure Radial Blower



- Radial impeller
- IP55 motor

OPTIONS

- Galvanised/stainless steel
- Intrinsically safe motors
- Hazardous locations (flameproof)
- Sizes ranging from 180mm to 315mm
- Motor Power - 3kW to 55kW
- Air Volume - 260L/s to 2,780L/s
- Static Pressure - 2,800Pa to 10,400Pa



**HEAVY
INDUSTRIAL
DUTY**

MODEL No.	INLET DIAMETER (mm)	OUTLET (mm)	MOTOR SPEED (RPM)	MOTOR POWER (kW)	AIR VOLUME (L/s)	STATIC PRESSURE (PA)
9.19-40A	180	128x92	2900	3	490	2200
					400	2800
					260	3380
9.19-45A	200	144x104	2900	5.5	700	2800
					570	3600
					390	4300
9.19-50A	225	160x115	2900	11	972	3400
					800	4400
					530	5300
9.19-56A	250	180x130	2900	18.5	1360	4300
					1120	5500
					722	6700
9.19-63A	280	202x145	2900	30	1950	5500
					1560	7000
					1040	8500
9.19-71A	315	227x136	2900	55	2780	5600
					2360	7000
					1530	10400